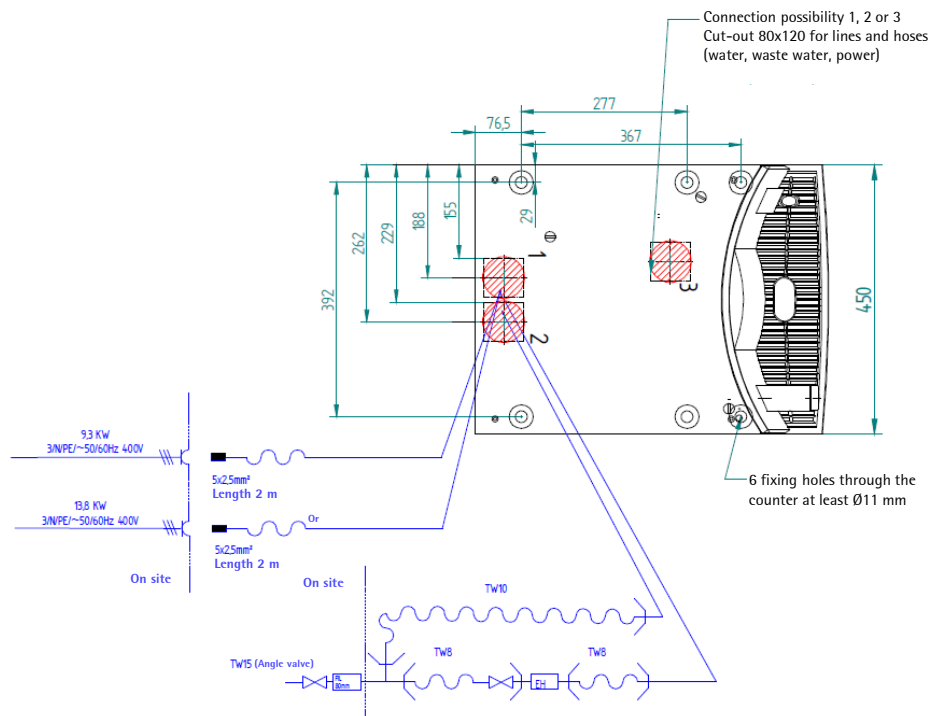
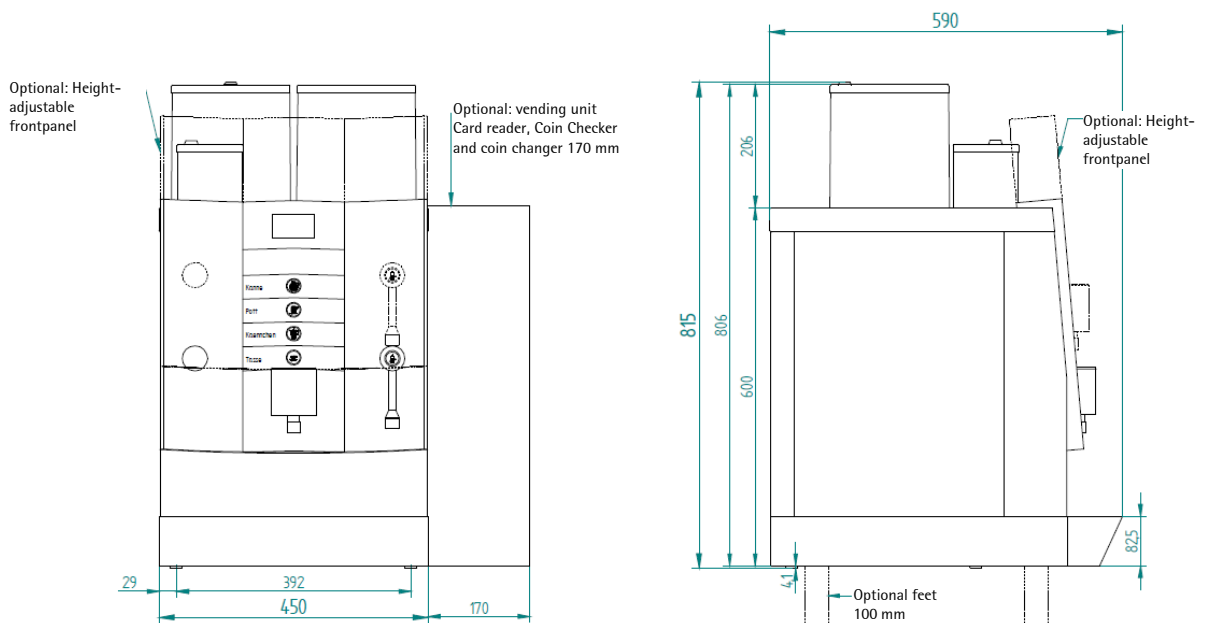


WMF coffeemachines

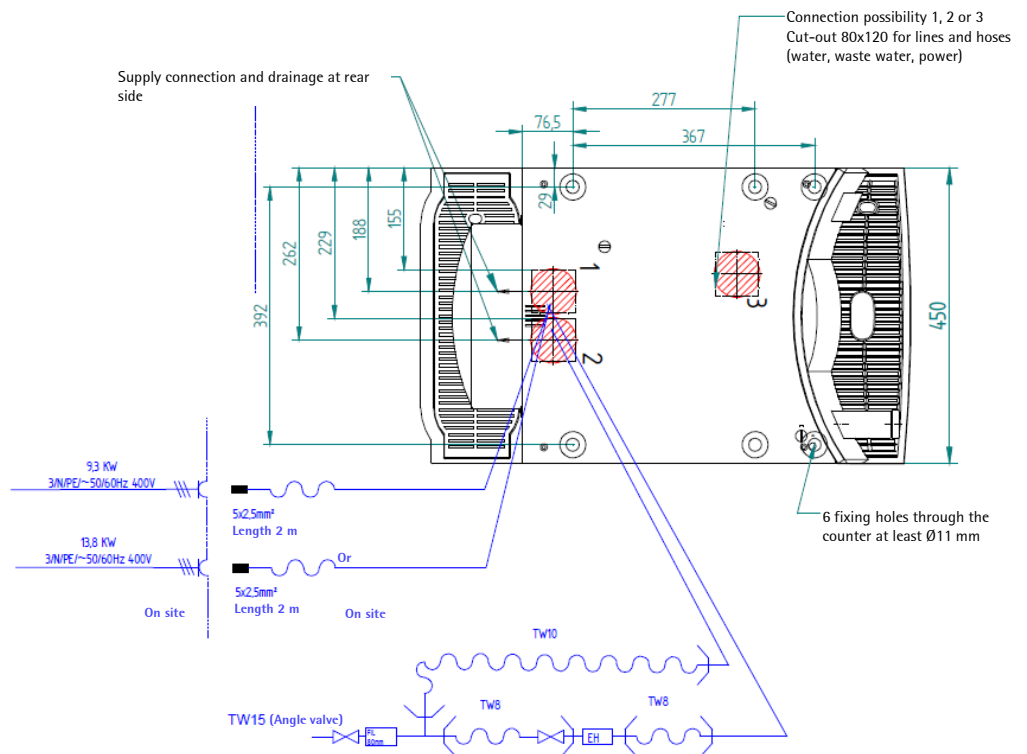
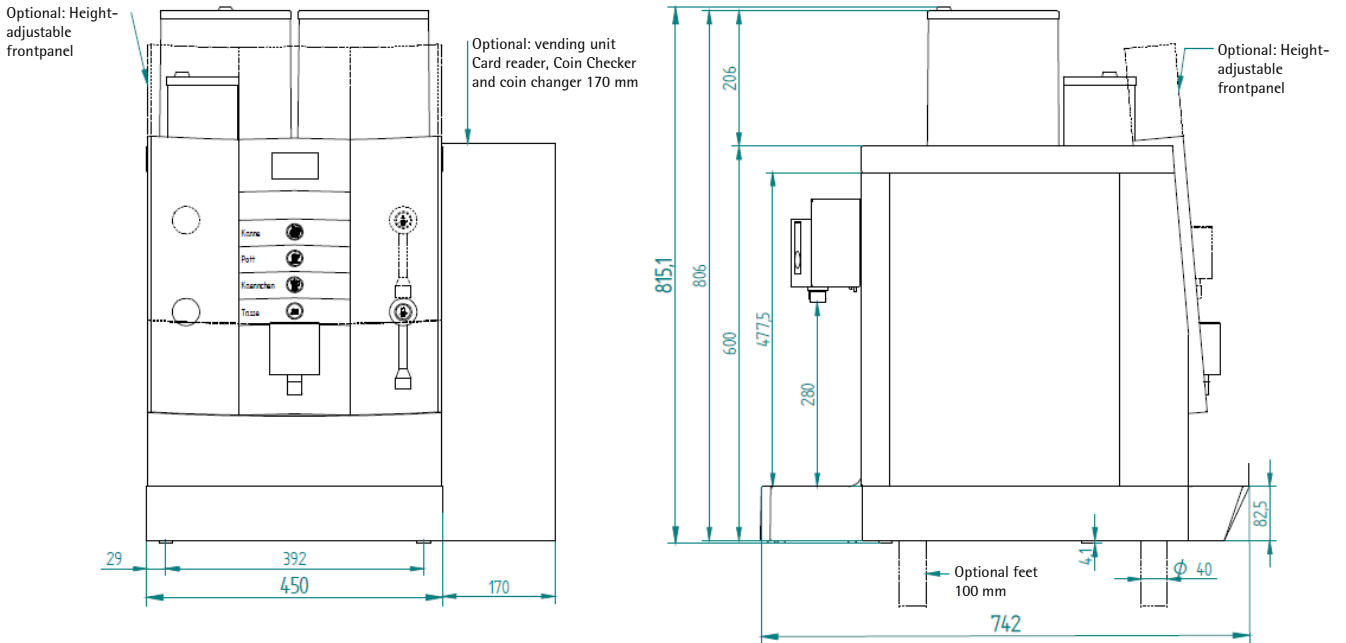
WMF CombiNation planning information



WMF coffeemachines



WMF CombiNation planning information



WMF CombiNation planning information

Conditions for usage and installation

Any necessary on-site preparatory work for electricity, water and drainage connections at the customer's premises is to be arranged by the machine owner / operator. The work must be carried out by authorised installation technicians in compliance with general, country-specific and local regulations. The WMF service engineers may only connect the coffee machine to existing prepared connection points. WMF Service is neither authorised nor responsible for carrying out any on-site installation work prior to connection.

Dimensions and empty weight	Width	450 mm	
	Height	815 mm	
	Depth	590 mm	
	Clearance heights	140 - 195 mm (275 mm with height-adjustable frontpanel, up to 330 mm with removed spout)	
	Weight	Approx. 68 - 98 kg (depending on the model)	
Water supply	Water supply line	1/2 inch hose connector with mains tap, and filter with 0.08 mm mesh size, on site. At least 0.2 MPa (2 bar) flow pressure at 8 l/min standard). Maximum 0.6 MPa (6 bar).	
	Inlet temperature	Maximum 35 °C.	
	Water drain tube (optional)	Tube a minimum of DN 40, minimum downward slope of 2 cm/m	
For use at altitude above NN	< 2000 m		
Electrical data	Nominal power rating	9.3 kW	13.8 kW
	Power supply	400 V 50 / 60 Hz (3 / N / PE)	
	Degree of protection	IP X0	
	Protection Class	I	
Installation Clearance	<p>For operating, service and safety reasons the machine should be installed with a clearance of not less than 50 mm at the back and sides from the building or non-WMF components. A minimum working space of 800 mm in front of the coffee machine a clearance of at least 200 mm above the product hopper is recommended. The height of the installation surface above the floor is at least 850 mm. If the coffee machine connections are to be run downwards through the counter, please make space for the lines, which can reduce the usable space below the machine.</p> <p>If the coffee machine is operated with a water filter the additional space under the machine depending on the filter size has to be considered. For further information see filter instructions.</p>		
Ventilation	<p>If ventilation possibility is limited sufficient ventilation need to be provided e.g machine on feet extension, active ventilation, additional ventilation slots/ openings in counter area. Ventilation slots must not be covered. Under certain circumstances a forced ventilation on site is necessary to ensure heat dissipation.</p>		

WMF CombiNation planning information

Installation surface / water spray	The device must be placed and leveled on a horizontal, sturdy, water-resistant, and heatproof base. The device must not be cleaned using a water jet. The device must be installed where it is protected against water spray. The device must not be located on a surface that is sprayed or cleaned with a water hose, steam jets, steam cleaner, or similar devices.		
Electrical connection	<p>These specifications for the electrical connection and the standards quoted apply for connecting the coffee machine in EU countries. It may be necessary to also observe additional country-specific regulations. Outside the EU countries acceptance of the standards quoted is to be checked by the legal entity or natural person who wishes to use the coffee machine. The local power supply must be constructed according to the currently valid IEC 364 (DIN VDE 0100). An isolated ground socket or a country-specific single-phase socket for single-phase connection, or a 5-pole CEE / CEKON socket per EN 60309 or a country-specific multi-pole socket for a three-phase connection, must be available near the machine. The sockets are part of the customer's on-site installation. The mains cable must not come into contact with hot surfaces. If the mains cable for this device is damaged then it must be replaced by our service personnel or a similarly qualified person, in order to prevent hazards.</p> <p>Important advice regarding accounting systems: In case of operation with a card reader an additional and separately fuse-protected shockproof socket must be installed onsite if necessary depending on type of card reader. The supplier of the card reader is to be asked for the required fuse protection. In order to prevent possibly occurring disturbances of our screened data lines by potential equalization currents between the units, an additional potential equalization according to VDE 0800-2 should be provided for units connected to an accounting system.</p>		
Water supply and drainage	<p>The water supply must be located close to the machine (max. distance 800 mm). An anytime easily accessible and sufficiently dimensioned water tap (preferably ball tap) as well as a dirt filter with mesh size 0,080 mm must be installed below the counter in the water supply. If the coffee machine is connected to a drain connection the drain must be on the rear side of the base cabinet, a siphon must be installed in the drain pipe. (Fit hose connection in funnel with hose ring mount.) For connection from below through the counter a cut-out must be made in the hatched area according to drawing (see top view or a hole 80 - 120 mm). For drinking water with carbonate hardness above 9°dKH (carbonate hardness), a WMF water filter should be fitted upstream.</p>		
Miscellaneous	Ambient temperature	+5 °C to maximum +35 °C (empty the water system in case of frost).	
	Maximum humidity	80 % relative humidity without condensation. Do not use device outdoors.	
	Heat dissipation	0.2 kWh/h standby mode 9.1 kWh/h maximum use	0.2 kWh/h standby mode 13.6kW/h maximum use
	Continuous sound pressure level (Lpa)	< 70 dB(A)	

For more information as the instruction manual, safety data sheets and certificates, see:

<http://www.servicecenter.wmf.de/>

All information refers to coffee machines/ equipment as standard version. Individual solutions can differ from the standard version.

<http://www.wmf-kaffeemaschinen.de/fachplaner>

WMF Group GmbH | Eberhardstraße 35 | 73312 Geislingen (Steige)